

JETSET LEVEL TWO

LISTENING TEST

SET VERSION

PRACTICE PAPER

THE TEST LASTS APPROXIMATELY 20 MINUTES

You need

- This question paper
- An answer sheet
- A pencil

You may NOT use a dictionary.

**Do NOT open this paper until you are told to do so.
Try to answer ALL the questions.**

INSTRUCTIONS

- Listen to each question carefully
- Select the correct answer and then mark your selection on your answer sheet
- Only mark **one** answer for each question

Part One

Read each question, listen to the recording and then choose true (A) or false (B). Mark your choices on your answer sheet.

- | | | |
|--|-----------------|------------------|
| 1. Today is Saturday 25 th of May. | A = True | B = False |
| 2. Tokyo is a quiet city. | A = True | B = False |
| 3. People go to the parks in the Spring to see the flowers. | A = True | B = False |
| 4. Fernando grows vegetables in his garden. | A = True | B = False |
| 5. Fernando's farm is near the sea. | A = True | B = False |
| 6. In the summer Isobel goes swimming everyday with her brother. | A = True | B = False |
| 7. Spanish people like to buy clothes and food. | A = True | B = False |
| 8. Michael lives in the beautiful countryside in Scotland. | A = True | B = False |
| 9. Michael climbs trees and looks for animals. | A = True | B = False |
| 10. If you want to call the radio station, the number is 8760. | A = True | B = False |

(10 marks)

Part Two

Listen to each question and select the correct answer (A, B, C or D). Mark your selection on your answer sheet

1. What date is it (in the story)?



A



B



C



D

2. What time did the old man lose his money?



A



B



C



D

3. Where did he put the money?



A



B



C



D

4. How did the old man go home?



A



B



C



D

Part Two (continued)

5. What was the tall man wearing?



A



B



C



D

6. What was the number of the taxi?



A



B

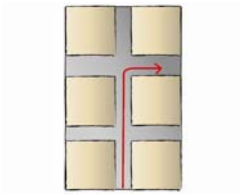


C

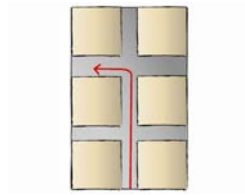


D

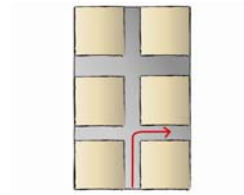
7. Where did the taxi go?



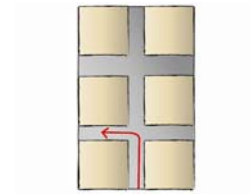
A



B



C



D

8. Which is the correct number to ring?



A



B



C



D

Part Two (continued)

9. Where is the restaurant?



A



B



C



D

10. What are the very best things to eat there?



A



B



C



D

11. What is the newsreader's favourite desert?



A



B



C



D

12. Where does Mario come from?



A



B



C



D

Part Two (continued)

13. Which day is the restaurant closed?



14. Where did Mario's family go last week?



15. What jumped on their car?

