

JETSET LEVEL ONE

LISTENING TEST PRACTICE PAPER

JET VERSION

THE TEST LASTS APPROXIMATELY 20 MINUTES

You need

- This question paper
- An answer sheet
- A pencil

You may NOT use a dictionary

**Do NOT open this paper until you are told to do so.
Try to answer ALL the questions.**

INSTRUCTIONS

- Listen to each question carefully
- Select the correct answer and then mark your selection on your answer sheet
- Only mark **one** answer for each question

Part One

Listen to the recording, read the questions and select True (A) or False (B).
Mark your answers on your answer sheet.



- | | | | |
|-----|---|-----------------|------------------|
| 1. | The date is Friday 4 June. | A = True | B = False |
| 2. | Charlie is wearing a red T-shirt. | A = True | B = False |
| 3. | Joe gets on the bus with Charlie. | A = True | B = False |
| 4. | Joe is not happy. | A = True | B = False |
| 5. | Charlie is in class 6E. | A = True | B = False |
| 6. | Charlie's teacher wears glasses. | A = True | B = False |
| 7. | At lunchtime, Charlie eats a banana. | A = True | B = False |
| 8. | Joe waits for Charlie in the garden. | A = True | B = False |
| 9. | Charlie gives some of his dinner to Joe. | A = True | B = False |
| 10. | Charlie and Joe play with a ball in the garden. | A = True | B = False |

(10 marks)

Part Two

Listen to each question and select the correct answer (A, B, C or D). Mark your selection on your answer sheet.

11. Where does Bella live?



A



B



C



D

12. Which is Bella's dad?



A



B



C



D

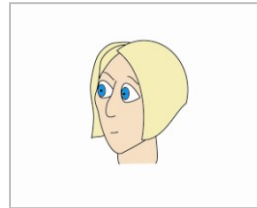
13. Which is Bella?



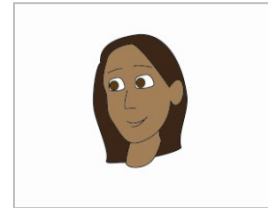
A



B



C



D

14. How old is Bella today?



A



B



C



D

15. What is Bella wearing?



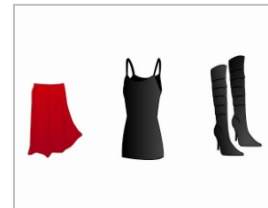
A



B



C



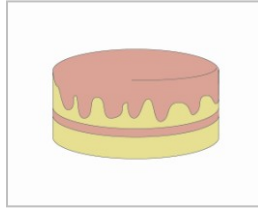
D

Part Two (continued)

16. What is Bella's favourite food?



A



B



C



D

17. Where does Bella's Grandma live?



A



B



C



D

18. Where does Bella go on Thursdays?



A



B



C



D

19. Who is coming to Bella's party?



A



B

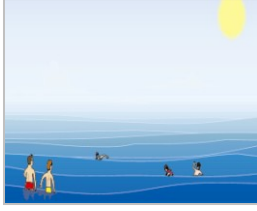


C



D

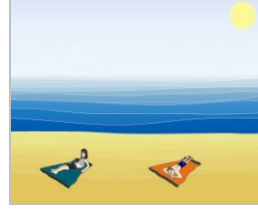
20. What is Bella going to do on holiday?



A



B



C



D

(10 marks)